

Silicone Breastmilk Collector

柔适集乳器

EN Breastmilk Collector
Instructions for use

ZH 集乳器使用说明



产品用途：

妈妈在一侧进行亲喂或是吸乳时，使用美德乐集乳器可以帮助另一侧进行溢乳的收集。



使用方法：

- 1 亲喂或吸乳前，为集乳器装好挂带，然后在您的颈部，避免使用时意外撒漏。
- 2 挤压集乳器的瓶身左右两边，将护罩贴紧乳房，产生吸力，即可开始亲喂或吸乳。
- 3 集乳器装满或您停止集乳后，扶住集乳器，同时，轻轻挤压护罩边缘，即可取下集乳器。
- 4 完成集乳后，请将集乳器放置在桌面，施加一定压力后，底部吸盘即会与桌面紧密贴合，不易发生倾倒。
- 5 拿起时，轻轻抬起集乳器底部吸盘处的掀片。
- 6 如需短时间保存：可搭配硅胶防漏塞及盖子，常温保存或放置冰箱。

如需长时间保存：将乳汁倒入美德乐储奶袋或储奶瓶内放入冰箱保存。

清洁与保养：

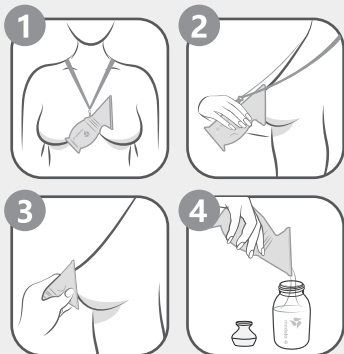
- 首次使用前，请将集乳器彻底冲洗干净（推荐使用蒸馏水），加热并煮沸约3分钟，然后让其冷却，晾干。
- 清洁前，请先拆下挂带。不要使用刺激性化学品进行清洁。
- 每次使用后，请务必立即清洗产品的所有部件。应用温和的清洗剂进行清洗，再用清水冲洗干净。
- 如果使用洗碗机清洗，仅可放在洗碗机顶层。
- 可放入美德乐微波炉消毒袋进行消毒。
- 集乳器每次使用前请先检查，如发现破损或老化请停止使用，并及时更换。
- 集乳器采用硅胶材质，硅胶易氧化，使用时间过长会发黄，建议使用3个月进行更换。
- 请避免接触尖锐物体。

注意事项：

- 使用硅胶防漏塞时，请确保塞紧，以免造成撒漏。
- 使用时，请注意集乳器对准乳头，避免压迫乳头前端的乳管开口。
- 集乳器可能会因为吸力、容量、皮肤湿度等情况掉落，请注意提前防备。
- 请将本产品及部件放置于婴幼儿无法触及处。
- 产品与包装部分不是玩具，请勿让婴幼儿玩耍。
- 集乳器挂带仅可用于成人佩戴，请不要将挂带套在婴幼儿颈部。
- 切勿在无人看管的情况下，将集乳器挂带留给婴幼儿。
- 请不要让婴幼儿咀嚼本产品及部件。
- 如有破损，请丢弃。

Intended use:

When the mother is breastfeeding or pumping on one side, Medela breastmilk collector can help to collect the spilled breast milk on the other side.



How to use:

1 Before breastfeeding or pumping, attach the lanyard to the breast milk collector and then wear it around your neck to prevent accidental spills during use.

2 Squeeze the left and right sides of the breast milk collector and firmly place the shield against your breast to form an airtight seal. You can then start breastfeeding or pumping.

3 Once breast milk collector is full or you have stopped pumping / feeding, hold on the collector and gently squeeze the shield to remove the collector.

4 After finishing, put the collector on a table, and push down a little, then the suction base will firmly stick to the table surface.

5 When picking it up, gently lift up the tab on the collector's suction base.

6 When you need to store breastmilk for a short time, you can use the silicone leak-proof plug and cap, and store it at room temperature or in the refrigerator.

When you need to store it for a longer period, pour your breastmilk into a Medela storage bag or storage bottle.

Cleaning and maintenance:

- Before the first use, thoroughly rinse and clean the collector. Place all parts except strap into a pan, and fill with cold water (distilled water is recommended). Bring the water to boil and allow it to continue boiling for approximately three minutes. Drain off the water and dry the parts.
- Remove the lanyard from the collector before cleaning. Do not clean with harsh chemicals.
- Always wash all parts immediately after each use. Parts can be washed with a mild cleaning solution, rinsed thoroughly in cold water.
- Dishwasher safe on top rack only.
- Safe to sterilize in Medela Microwave bag.
- Check the collector before each use, and do not use it if there is damage or wear. Replace it right away.
- The collector is made of silicone, which is a material that easily oxidized, so the material will turn yellow after using for a long time. We recommend to replace it every three months.
- Make sure the product is not placed near any sharp objects.

Cautions:

- When using the silicone leak-proof plug, make sure that it is inserted tightly in order to prevent leakage.
- During use, make sure that the collector doesn't press on the milk ducts of the nipple.
- Breastmilk collector may fall due to suction, capacity, skin humidity, etc. Please take precautions in advance.
- Keep the product and accessories away from babies and children.
- The product and its package are not toys, so do not allow babies and children to play with them.
- The lanyard is solely designed and intended for wearing by adults. Do not place it around a baby's neck.
- Never leave the babies and children unattended with the lanyard.
- Do not let the baby chew on the product or its accessories.
- Discard the product if it is damaged.

mother's milk,
everyday amazing™

产地: 中国广州

生产商: 广东新朋胜日用品有限公司

地址: 广州市白云区人和镇鹤龙五路419号

经销商: 美德乐(常州)医疗科技有限公司

地址: 常州市新北区创业西路2号A1栋
(中瑞(常州)国际产业创新园)

客服电话: 400-670-3600

www.medela.cn



关注官方微信
“美德乐母乳妈妈
俱乐部”
解锁更多母乳喂养
专业资讯和专属福利

