

The ONLY True Hospital Early Activation Solution

Every Drop Counts™



NEW
SOLUTION



Bioactive Components



MATERNAL IMMUNE CELLS & ANTIBODIES:
Provides passive immunity with immediate and tailored protection against pathogens.¹



PROBIOTICS:
Health-promoting bacteria that protect against pathogens.^{2,3}



HUMAN MILK OLIGOSACCHARIDES (HMOs):
Indigestible oligosaccharides that serve as food or “prebiotics” and decoys for pathogenic bacteria.^{4,5}



BIOACTIVE PROTEINS:
These include lactoferrin and lysozyme, which have antimicrobial properties.⁶⁻⁹

Colostrum coats and protects the mouth, esophagus, and helps train the infant's immune response.¹⁰

Benefits of Colostrum Feeding

REDUCES JAUNDICE:

Acts as a laxative to clear meconium, reducing bilirubin buildup.¹¹

PROTECTS AGAINST INFECTIONS:

Provides immune protection.¹²

MINIMIZES HYPOGLYCEMIA:

Contains nutrients to decrease risk of low blood glucose.¹³

Oral Immune Therapy for Preterm Infants

Oral Immune Therapy involves administering a small volume of 0.1-0.2 mL of colostrum to the inside of the infant's cheeks until oral feeds begin.¹⁴⁻¹⁶ This method has been shown to be safe even for the smallest and most fragile infants, including those born weighing less than 1,000 grams.^{16,17}

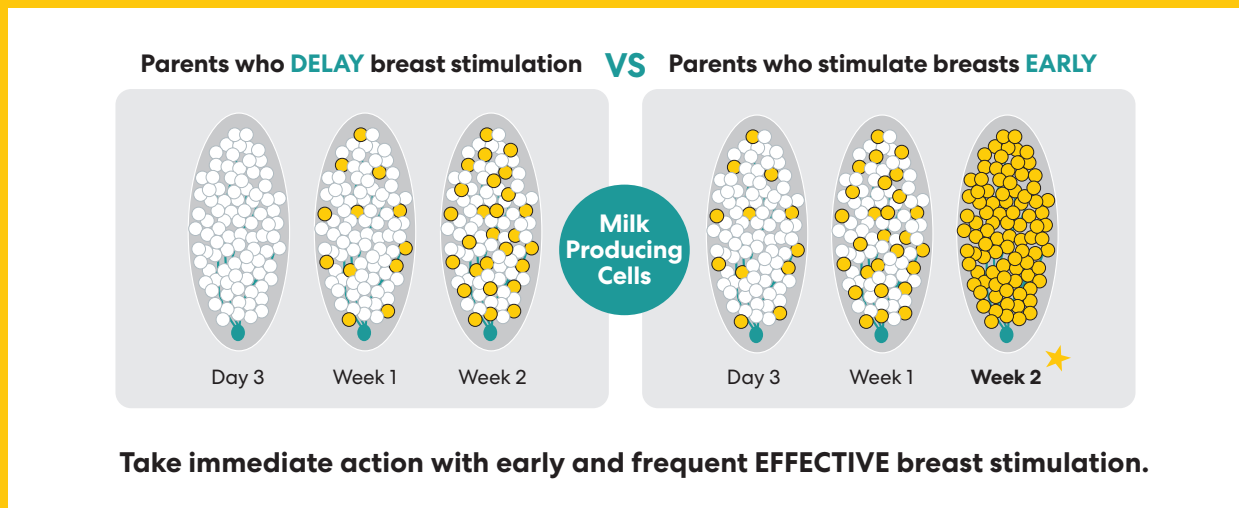


**SAFE FOR INFANTS
WEIGHING
<1,000
GRAMS**



Breast Programming: The Power of Early Breast Stimulation

Effective **ACTIVATION** of milk-producing cells in the first hours and days after birth are critical for establishing long-term milk production due to the hormonal shifts postpartum that trigger milk.



Symphony PLUS® Unmatched Superiority

The **ONLY** breast pump with exclusive Initiation Technology™

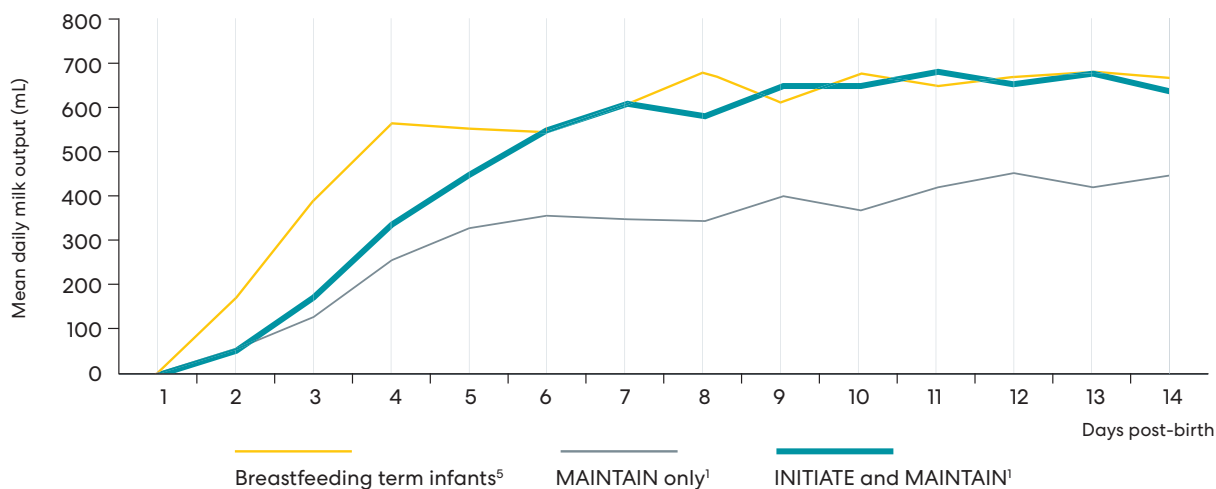
- ✓ **Doubles the number** of mothers who 'Come to Volume'¹⁸⁻²⁰
- ✓ Up to **50% increase** in milk Supply^{*18}

The Symphony Difference: Backed by Clinical Evidence

- 8 RCTs
- 1 Non-randomized controlled study (NRCT)

Optimizing Long-Term Breast Milk Supply

Mothers who used **INITIATE*** had significantly more milk, resulting in a milk supply that matched the daily intake of an exclusively breastfed infant.²²

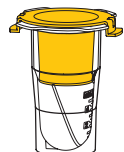
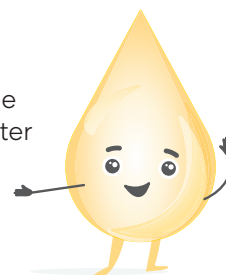


Innovative Solution for Optimal Post-Birth Pumping While Protecting Colostrum from Loss and Contamination

NEW! INTEGRATED SOLUTION

Colostrum is essential for the long-term health and development of newborns.

Whether you're supporting a term-infant or caring for a fragile infant in the NICU, Medela offers the only truly holistic Colostrum Solution—designed to help you collect, store, thaw, warm and administer every precious drop with confidence. Because when it comes to colostrum, Every drop counts™.

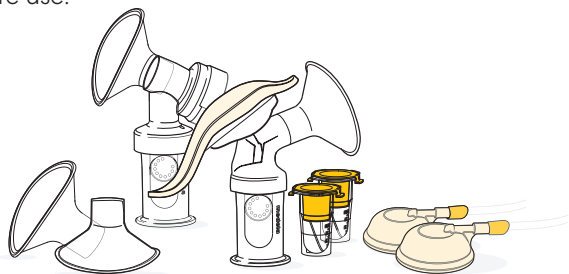


Colostrum Protector (#101046344)

Efficient Colostrum Collection and Storage

Engineered to capture colostrum prior to entering pump components, minimizing volume loss during expression. Collected colostrum can be administered directly to the infant or stored securely in the Colostrum Protector.

The container is freezer-safe for up to 12 weeks, ensuring safe preservation for future use.



Symphony & Harmony® Breast Milk Initiation Kit (#67355S/101029005)

An Unmatched Solution for Early Milk Expression

Engineered to optimize pumping immediately after birth, this system seamlessly connects with the Symphony® Breast Pump. It offers unmatched support for activating milk-producing cells during the critical initiation phase and protects colostrum from loss and contamination.

Includes a Harmony® handle for flexible manual expression.



Waterless Milk Warmer™ (#87115/101029193)

Clinically Proven Warming with Integrated Efficiency

Thaw and warm colostrum in the ONLY neonatal milk warmer using dry convection heat—ensuring safe, standardized temperatures while preserving nutrients and reducing infection risk. Its seamless integration into neonatal workflows eliminates water, minimizes handling, and improves staff efficiency while maintaining strict safety standards.



Oral 1mL Syringe (#INT01/101029145)

Engineered for Precision and Minimal Waste

Designed to eliminate dead space and maximize delivery—ensuring more of this vital first milk reaches the infant.



Symphony Breast Milk Initiation Kit (#67350S/101029013)

Designed for Optimal Postpartum Pumping

Specifically engineered for use immediately after birth, this solution connects seamlessly with the Symphony® Breast Pump. It uniquely supports the activation of milk-producing cells while minimizing colostrum loss and exposure to contaminants.

References

1. Hassiotou F et al. Clin Transl Immunology. 2013; 2(4):e3. 2. McGuire MK, McGuire MA. Adv. Nutr. 2015; 6(1):112–123. 3. Boix-Amorós A et al. Nutr Rev. 2019; 77(8):541–556. 4. Bode L. Glycobiology. 2012; 22(9):1147–1162. 5. Cortez RV et al. Nutrients. 2021; 13(12). 6. Brockway MM et al. Adv Nutr. 2024; 15(1):100127. 7. Lönnerdal B, Lien EL. Nutr. Rev. 2003; 61(9):295–305. 8. Donovan SM. J Pediatr. 2016; 173 Suppl:S16–28. 9. Brock JH et al. Infect Immun. 1983; 40(2):453–459. 10. Newburg DS, Walker WA. Pediatr Res. 2007; 61(1):2–8. 11. Mitra S, Rennie J. Br J Hosp Med (Lond). 2017; 78(12):699–704. 12. Ballard O, Morrow AL. Pediatr Clin North Am. 2013; 60(1):49–74. 13. Giouleka S et al. Children (Basel). 2023; 10(7). 14. Kumar J et al. Nutr Rev. 2023; 81(10):1254–1266. 15. Snyder R et al. Pediatr Neonatol. 2017; 58(6): 16. Lee J et al. Pediatrics. 2015; 135(2):e357–66. 17. Rodriguez NA et al. J Perinatol. 2009; 29(1):1–7. 18. Meier PP et al. J Perinatol. 2012; 32(2):103–110. 19. Yuan S et al. Breastfeed Med. 2023; 18(7):506–513. 20. Post EDM et al. J Perinatol. 2016; 36(1):47–51. 21. Medela 2022 Colostrum Protector Evaluation Survey. 22. Neville MC et al. Am J Clin Nutr. 1988; 48(6):1375–1386.

*When using Initiation Technology followed by 2 Phase Technology, compared to 2 Phase Technology alone, over the first 14 days after birth.

Medela wordmark and logo, Symphony, Symphony PLUS, and Harmony are registered in the U.S. Patent and Trademark Office and the Canadian Intellectual Property Office. Science of Care and Every Drop Counts are trademarks of Medela. 0625 © 2025 Medela

medela 