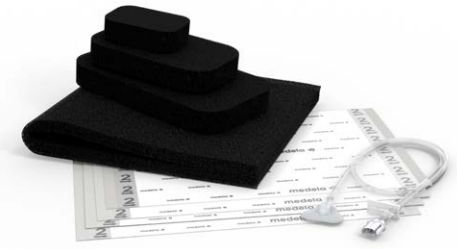


Invia® NPWT Dressings

THERAPY CONFIDENCE WITH EASE



Therapy Confidence

- **Intelligent** Pressure control from the pump to the wound site¹
- **Dynamic** Exudate Removal helps prevent blockages from the wound site to the pump
- **Secure**² tubing attachment with an audible click

Simplified Management

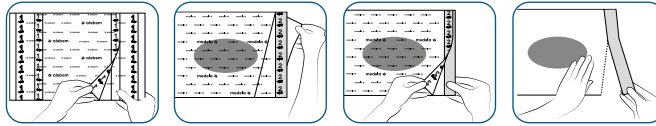
- **Convenient**² Quick-connector tubing interface
- **Intuitive** transparent film handling
- **Easy** dressing application in difficult patient anatomy locations

Medela provides efficient solutions to support clinicians with Negative Pressure Wound Therapy management in all patient care settings.

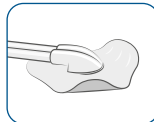
The Invia dressing kits with FitPad in conjunction with the Invia Negative Pressure Wound Therapy (NPWT) systems deliver therapy **confidence by intelligently controlling set pressure** at the wound site¹. Invia NPWT systems dynamically adapt the air flow cycle to both volume and viscosity of the fluid in the tubing to optimize exudate removal.

Select the appropriate dressing **with ease** from our streamlined product offer. The dressing kits share the same transparent film and suction interface components; you only have to select the type of wound filler (foam or gauze) and the appropriate size.

Experience an **established application technique** thanks to the transparent film with intuitive markings.

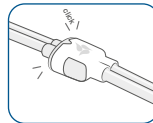
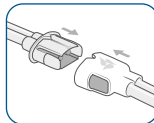


The **low profile design and flexible wings** of the suction interface (Invia FitPad) allow appropriate placement in difficult anatomic locations.



Overall height
8.5 mm
Wing thickness
0.45 mm

The **Quick-connector** provides an **easy and secure** tubing attachment² with an audible click.



Key features at a glance

- The Invia NPWT System with FitPad provides Intelligent Pressure Control with Dynamic Exudate Removal to help ensure NPWT is reliably delivered and controlled at the wound site
- Easy application of transparent film and FitPad
- Convenient and secure tubing attachment with the Quick-connector
- Streamlined offering of foam and gauze dressings

Technical data

Foam Reticulated polyether and polyurethane, hydrophobic material	Pore size: 600–800 microns
	Tensile strength: 20 PSI/138 kPa <small>PSI: Pounds per Square Inch</small>
Transparent Film Polyurethane film with acrylic adhesive	Size: 26 cm x 32 cm
	MVTR: 385 g/m ² /day <small>MVTR: Moisture Vapor Transmission Rate</small>

Invia foam or gauze dressings are intended to be used in conjunction with the Invia Negative Pressure Wound Therapy (NPWT) Systems to deliver negative pressure to the wound.

Find out more about Medela NPWT Portfolio at www.medelahealthcare.us

CAUTION: U.S. Federal law restricts this device to sale by or on the order of a physician.

Medical Vacuum Technology
for Healthcare Professionals

Please contact us or your local Medela representative for details.

Medela, Invia, and Invia FitPad are registered in the US Patent and Trademark Office. No trademark registrations in Canada.

Local contact

Medela AG
Lättichstrasse 4b
6340 Baar, Switzerland
www.medelahealthcare.com

USA
Medela LLC
1101 Corporate Drive
McHenry, Illinois 60050
USA
Phone +1 877 735 1626
Fax +1 815 307 8942
info-healthcare@medela.com
www.medelahealthcare.us

Canada
Medela Canada Inc.
4160 Sladeview Cres., Unit #8
Mississauga, Ontario, L5L 0A1
Canada
Phone +1 800 435 8316
Fax +1 800 995 7867
info@medela.ca
www.medelahealthcare.ca

1 Performance data on file at Medela AG
2 Usability Validation data on file at Medela AG